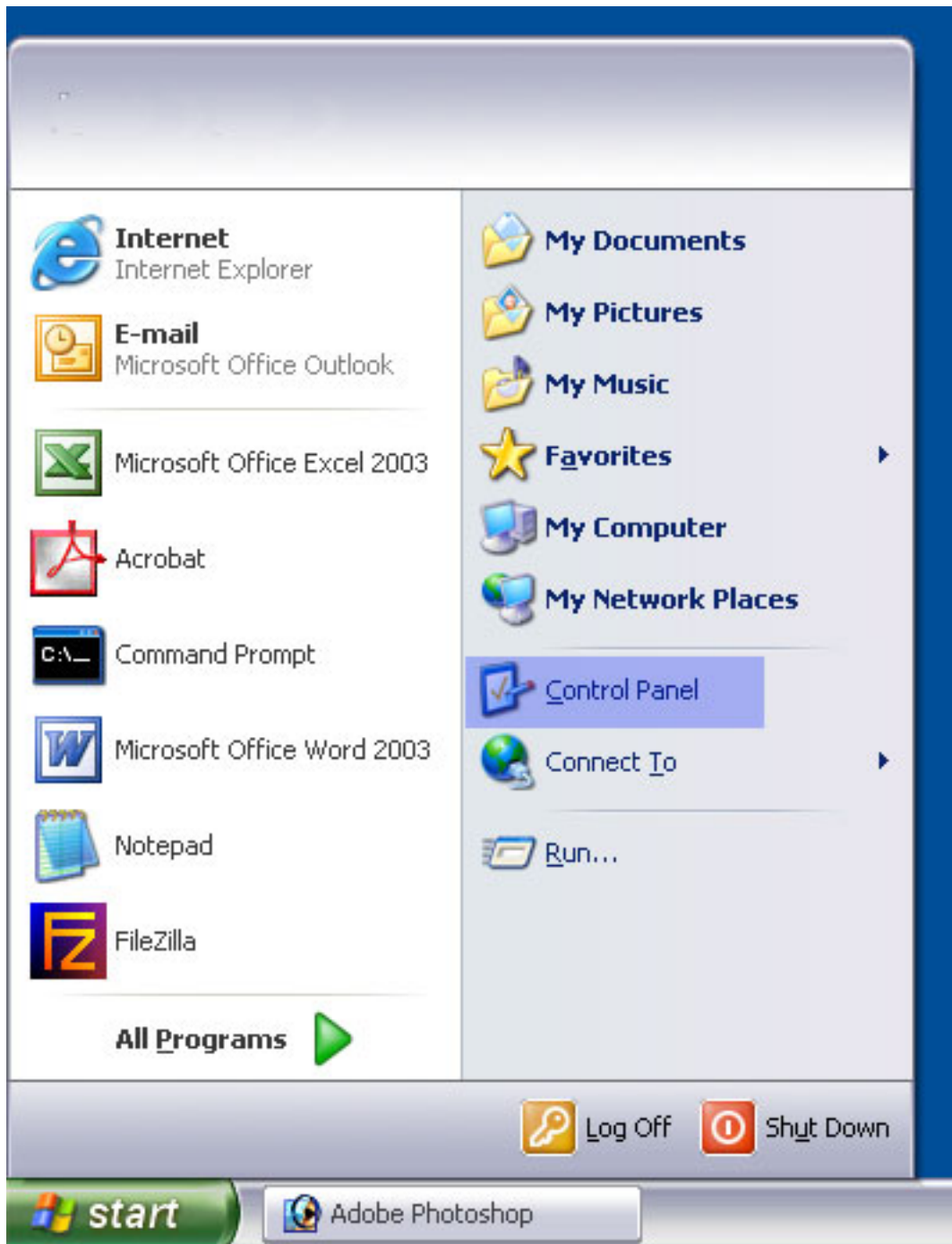
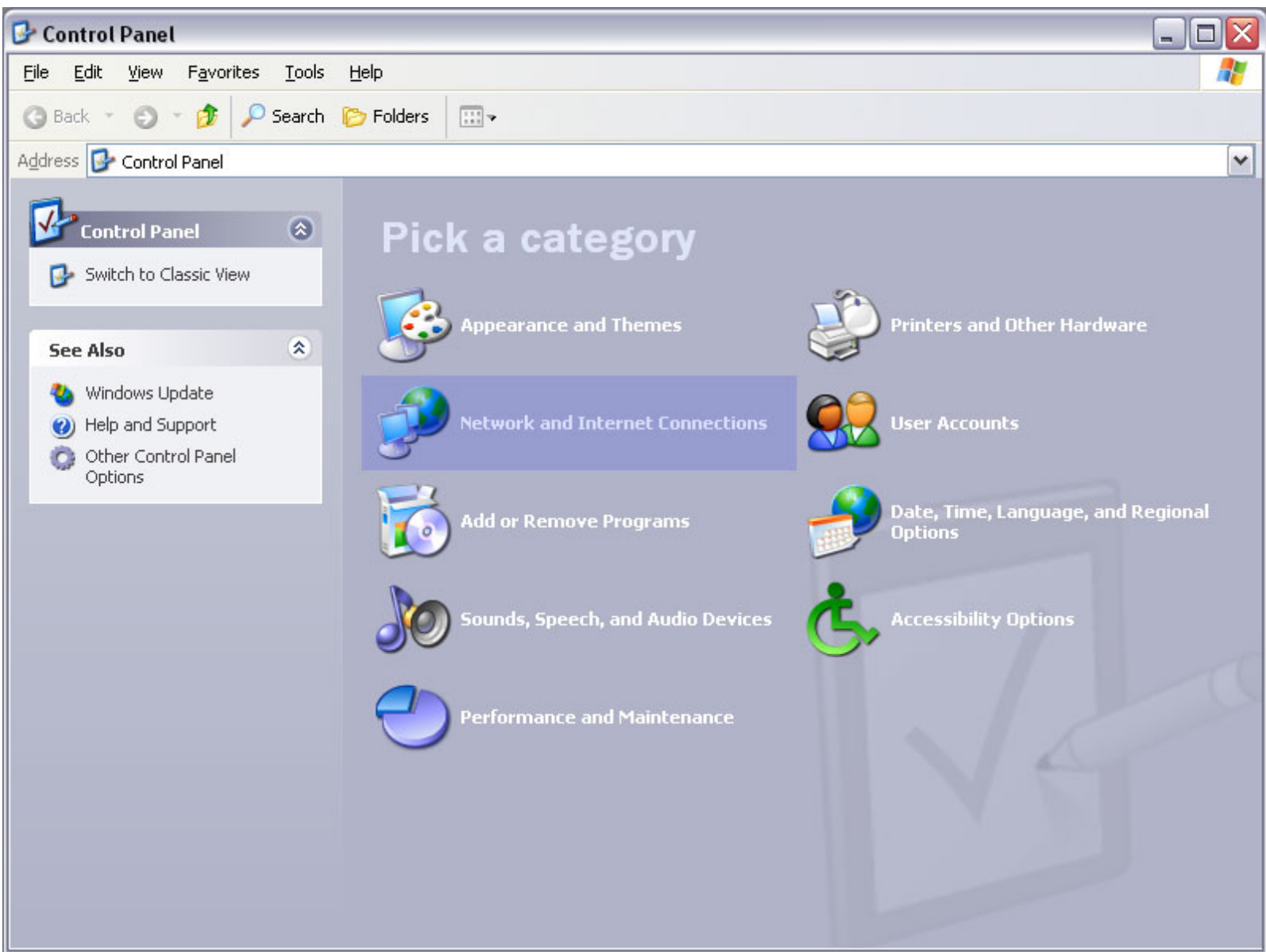


Step 1. Open the *Start* menu and choose *Control Panel*



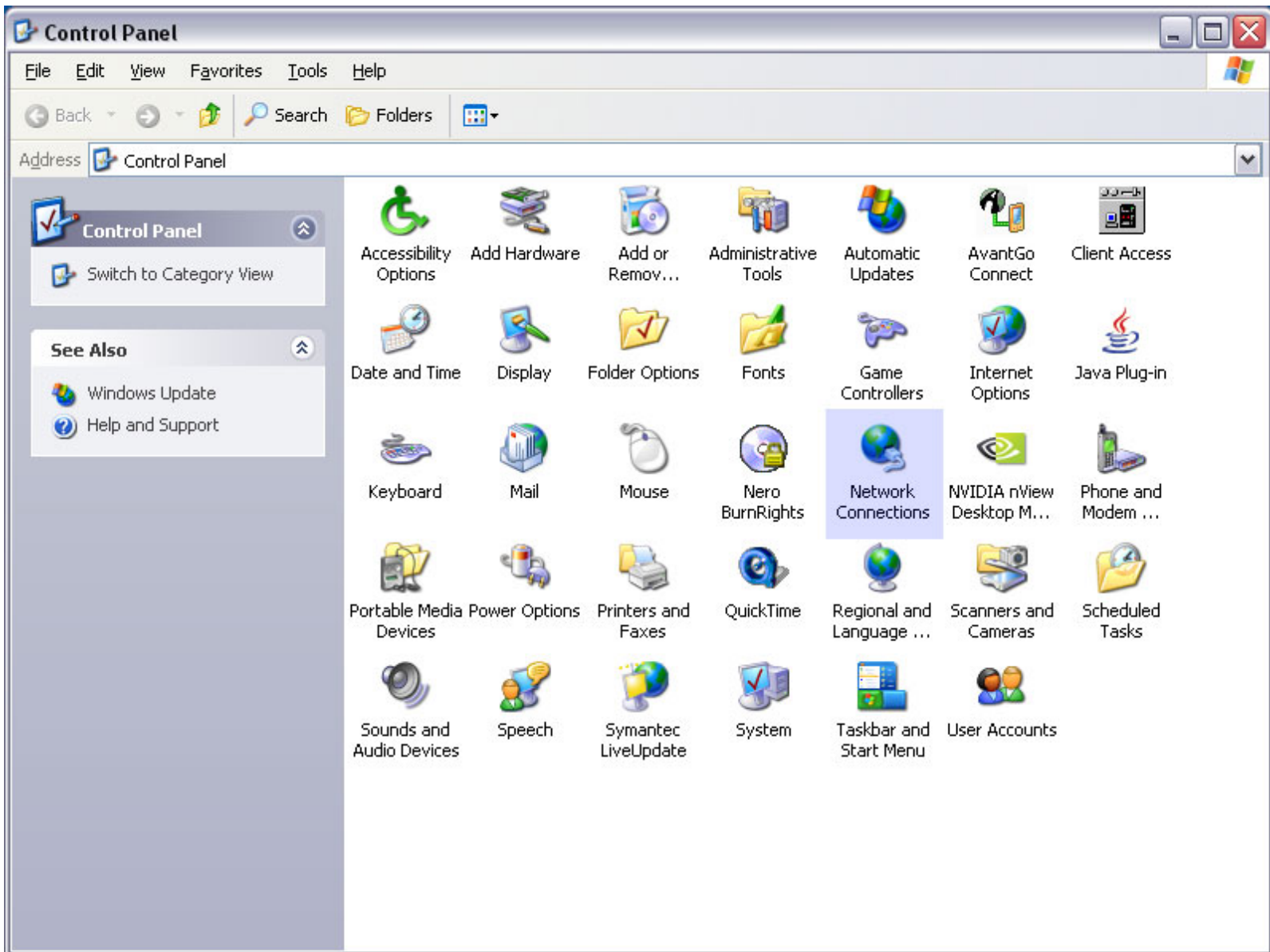
Previous | [Next](#)

Step 2. Select *Network and Internet Connections* from the *Control Panel*, If your *Control Panel* does not look like this please click this [link](#) to find alternate Instructions



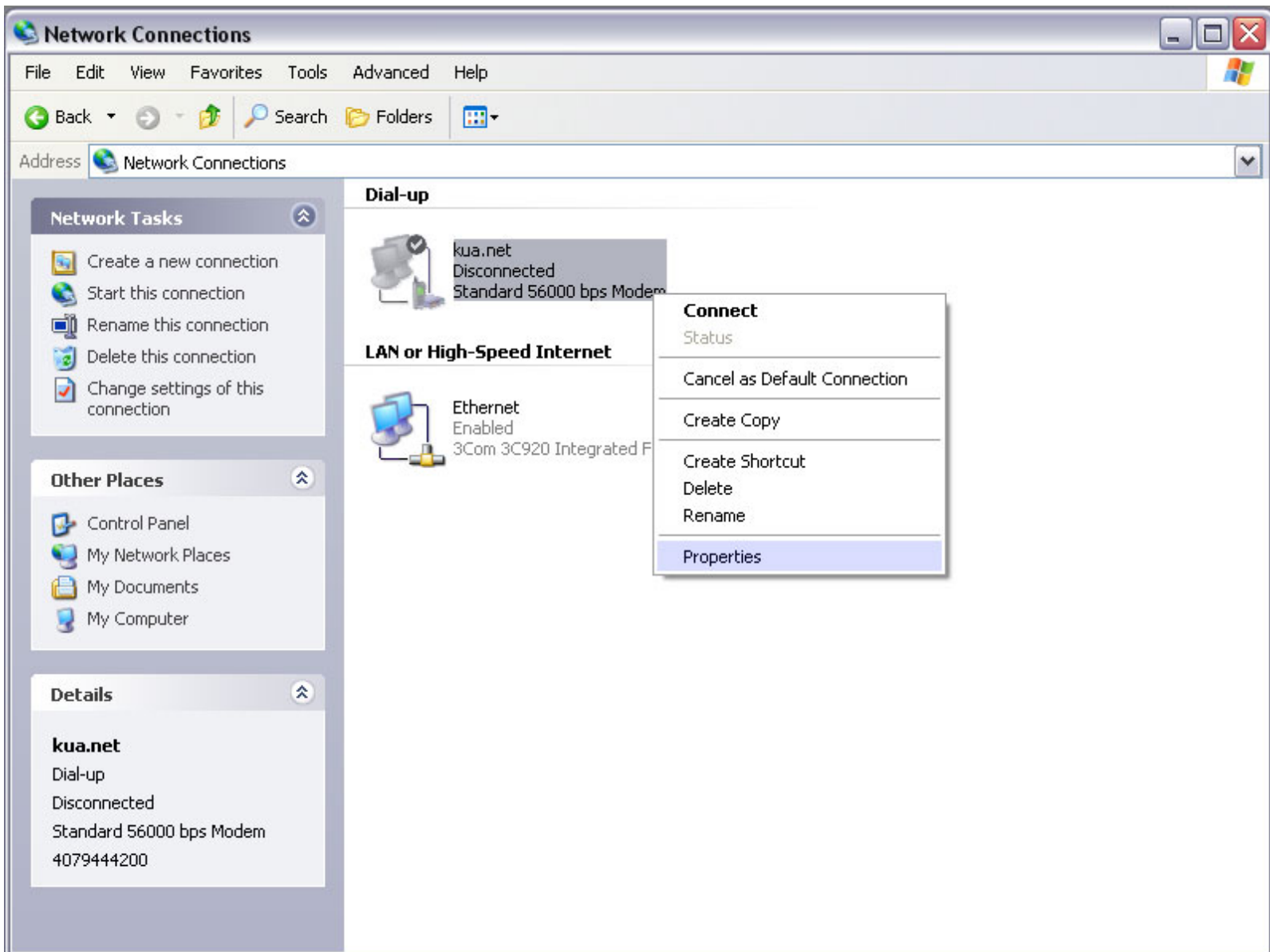
[Previous](#) | [Next](#)

Step 2. Choose *Network Connections* from the *Control Panel* window



[Previous](#) | [Next](#)

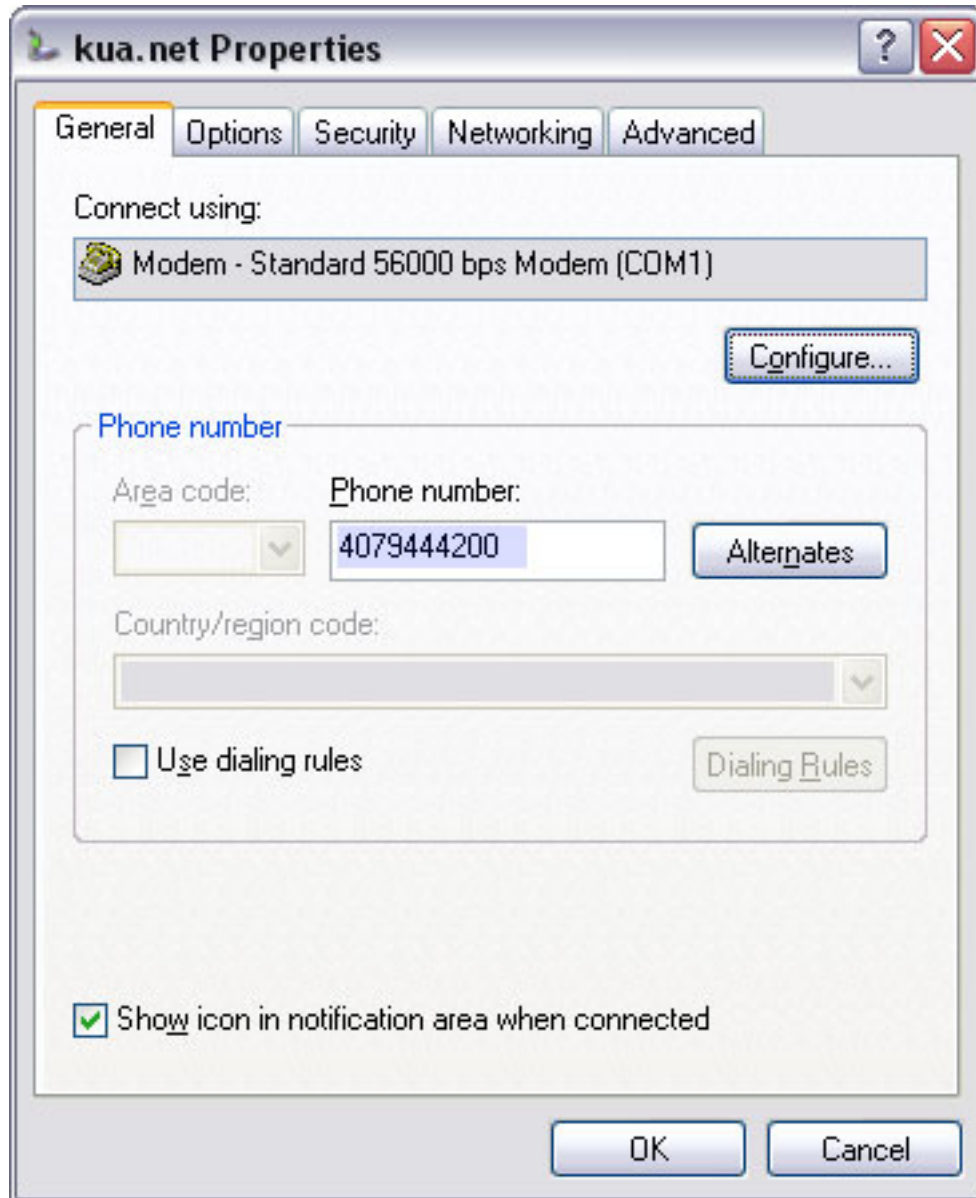
Step 4. Right click on the *kua.net* connection and choose *Properties* with the left mouse button.



[Previous](#) | [Next](#)

Step 5. Select the *Dialup Number* shown below and change it to the local number for your area.

Please remember you are responsible for choosing a number that is local for you, kua.net is not responsible for any charges you may incur by choosing the incorrect local number. You can find a local number at <http://www.kua.net/support..>



[Previous](#) | [Next](#)

Step 6. Click **OK** at the bottom of the *kua.net Properties* window.
Congratulations You're done!



[Previous](#) | [Next](#)